

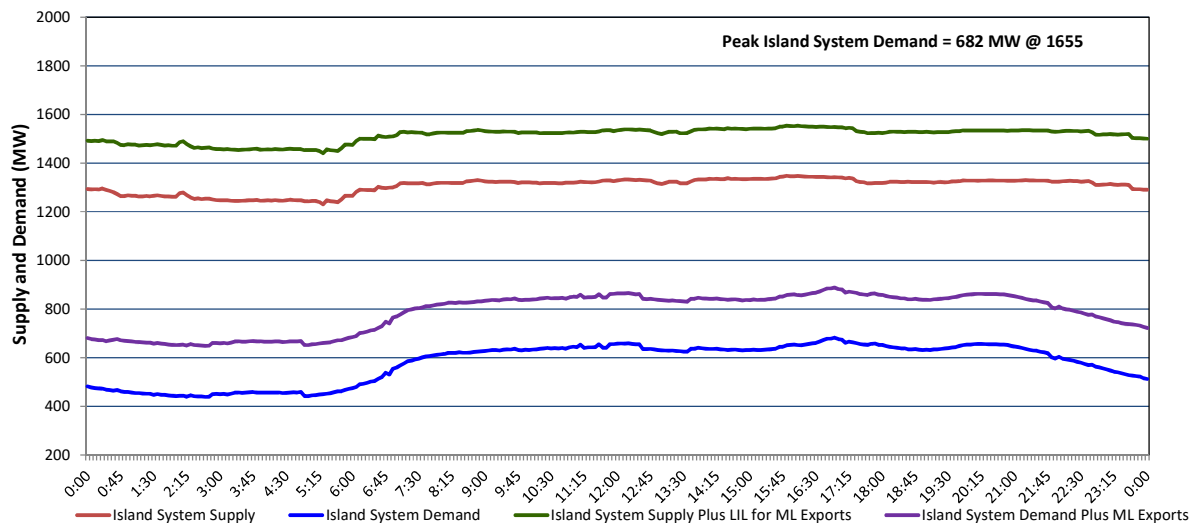
Newfoundland Labrador Hydro (NLH)

Supply and Demand Status Report Filed Wednesday, September 10, 2025

Section 1

Island Interconnected System - Supply, Demand & Exports

Actual 24 Hour System Performance For Tuesday, September 09, 2025



Island Supply Notes For September 09, 2025 ¹

- A** As of 0800 hours, March 30, 2025, Holyrood Unit 3 unavailable due to planned outage 130 MW (150 MW).
- B** As of 0823 hours, March 31, 2025, Bay d'Espoir Unit 1 unavailable due to planned outage (76.5 MW).
- C** As of 0823 hours, March 31, 2025, Bay d'Espoir Unit 2 unavailable due to planned outage (76.5 MW).
- D** As of 0800 hours, June 08, 2025, Holyrood Unit 2 unavailable due to planned outage 115 MW (170 MW).
- E** As of 1400 hours, June 29, 2025, St. Anthony Diesel Plant available at 7.7 MW due to forced derating (9.7 MW).
- F** As of 1439 hours, August 27, 2025, Upper Salmon Unit unavailable due to planned outage (84 MW).
- G** As of 0751 hours, September 02, 2025, Stephenville Gas Turbine unavailable due to planned outage (50 MW).
- H** As of 2000 hours, September 06, 2025, Holyrood Unit 1 unavailable due to forced extension to planned outage (170 MW).
- I** As of 1422 hours, September 09, 2025, Paradise River Unit unavailable due to forced outage (8 MW).

Section 2

Island Interconnected System - Supply, Demand & Outlook

Wed, Sep 10, 2025		Island System Outlook ²	Seven-Day Forecast	Island System Daily Peak Demand (MW)	
				Forecast ⁸	Adjusted ⁶
Island System Supply: ⁴	1,351 MW		Wednesday, September 10, 2025	750	700
NLH Island Generation: ^{3,7}	905 MW		Thursday, September 11, 2025	725	675
NLH Island Power Purchases: ⁵	35 MW		Friday, September 12, 2025	740	690
NP and CBPP Owned Generation:	185 MW		Saturday, September 13, 2025	780	730
LIL/ML Net Imports to Island: ⁹	226 MW		Sunday, September 14, 2025	765	715
			Monday, September 15, 2025	795	745
7-Day Island Peak Demand Forecast:	795 MW		Tuesday, September 16, 2025	775	725

Island Supply Notes For September 10, 2025

- Notes:**
1. Generation outages for running and corrective maintenance are included. These are not unusual for power system operations. They generally do not impact customer supply. Hydro schedules outages to system equipment whenever possible to coincide with periods when customer demands are low and sufficient supply reserves are available. However, from time to time equipment outages are necessary and reserves may be impacted.
 2. As of 0800 Hours.
 3. Gross continuous unit output.
 4. Gross output from all Island sources (including Note 3).
 5. NLH Island Power Purchases include: ML Imports, Exploits Generation, Rattle Brook, Star Lake, Wind Generation and capacity assistance (when applicable).
 6. Adjusted for interruptible load and the impact of voltage reduction when applicable.
 7. Due to limitations inherent in the design of combustion turbines, the output of combustion turbines may be reduced in the event that ambient temperatures exceed the threshold required for full rated output. This threshold is dependent on the design of each turbine.
 8. Does not include ML Exports.
 9. LIL Import sunk in the Island System. Actual LIL flows will be restricted by various system conditions including, but not limited to, Island Load, ML Exports and Avalon Unit status.

Section 3

Island Peak Demand and Exports Information

Previous Day Actual Peak and Current Day Forecast Peak

Tue, Sep 09, 2025	Island Peak Demand ¹⁰	16:55	682 MW
	Exports at Peak		206 MW
	LIL Net Imports to Island		5,101 MWh
Wed, Sep 10, 2025	Forecast Island Peak Demand		750 MW

- Notes:**
10. Island Demand is supplied by NLH generation and purchases, LIL Imports plus generation owned and operated by Newfoundland Power and Corner Brook Pulp & Paper (Deer Lake Power, DLP).